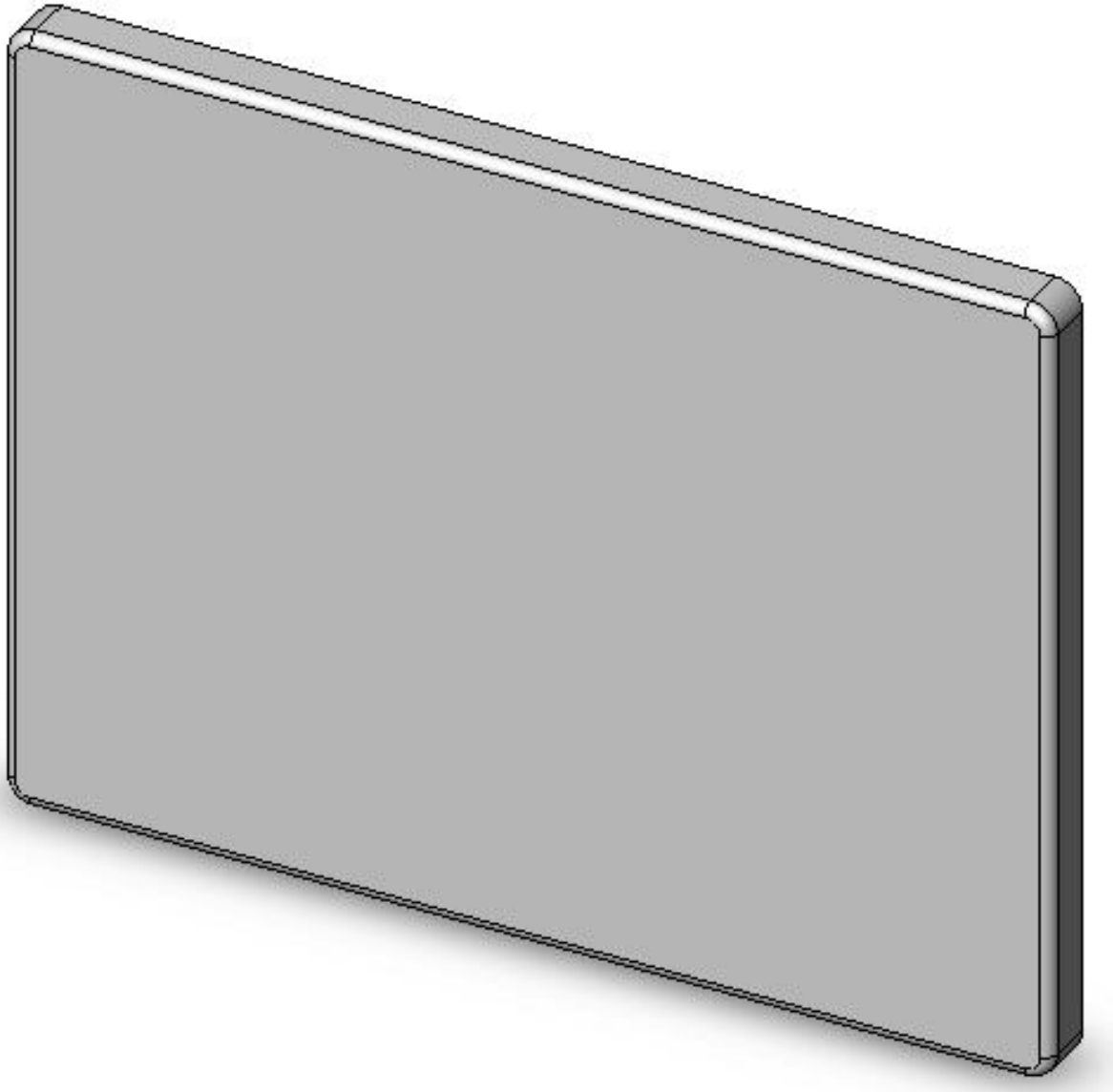


## 2.5~2.7GHz RF HI-GAIN ANTENNA

ITEM No : 1PG-2616



### **SPECIFICATION**

- Frequency : 2500~2700 MHz
- Max gain : 16dBi
- Connector : N female
- Max input power : 10W Max
- Wave impedance : 50 OHMS  $\pm 5$
- Dimensions : 270x205x15mm
- Weight : 1000g  $\pm 10$
- For image/Data/Voice communication and Wireless LAN system

ITEM NO:1PG-2616

