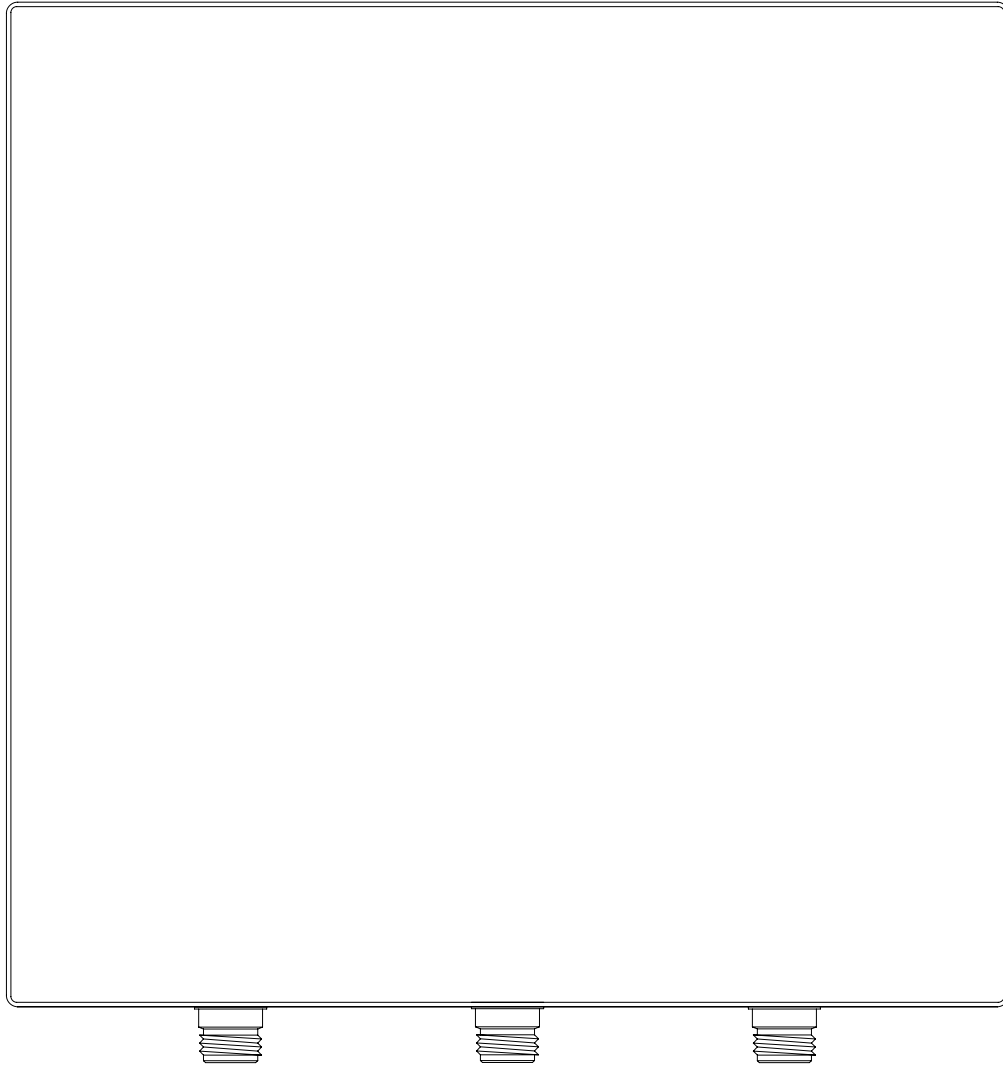


# 2.5~2.7GHz RF HI-GAIN ANTENNA

ITEM No : 1PGM-2612-1



## ※ SPECIFICATION

- Frequency: 2500~2700 MHz
- Max gain: 12dbi
- Connector: N female
- Max input power: =<30W
- Wave impedance: 50 ohm
- dimensions: 263x263x48mm
- Weight: 1310 g
- For image/Data/Voice communication and Wireless LAN system