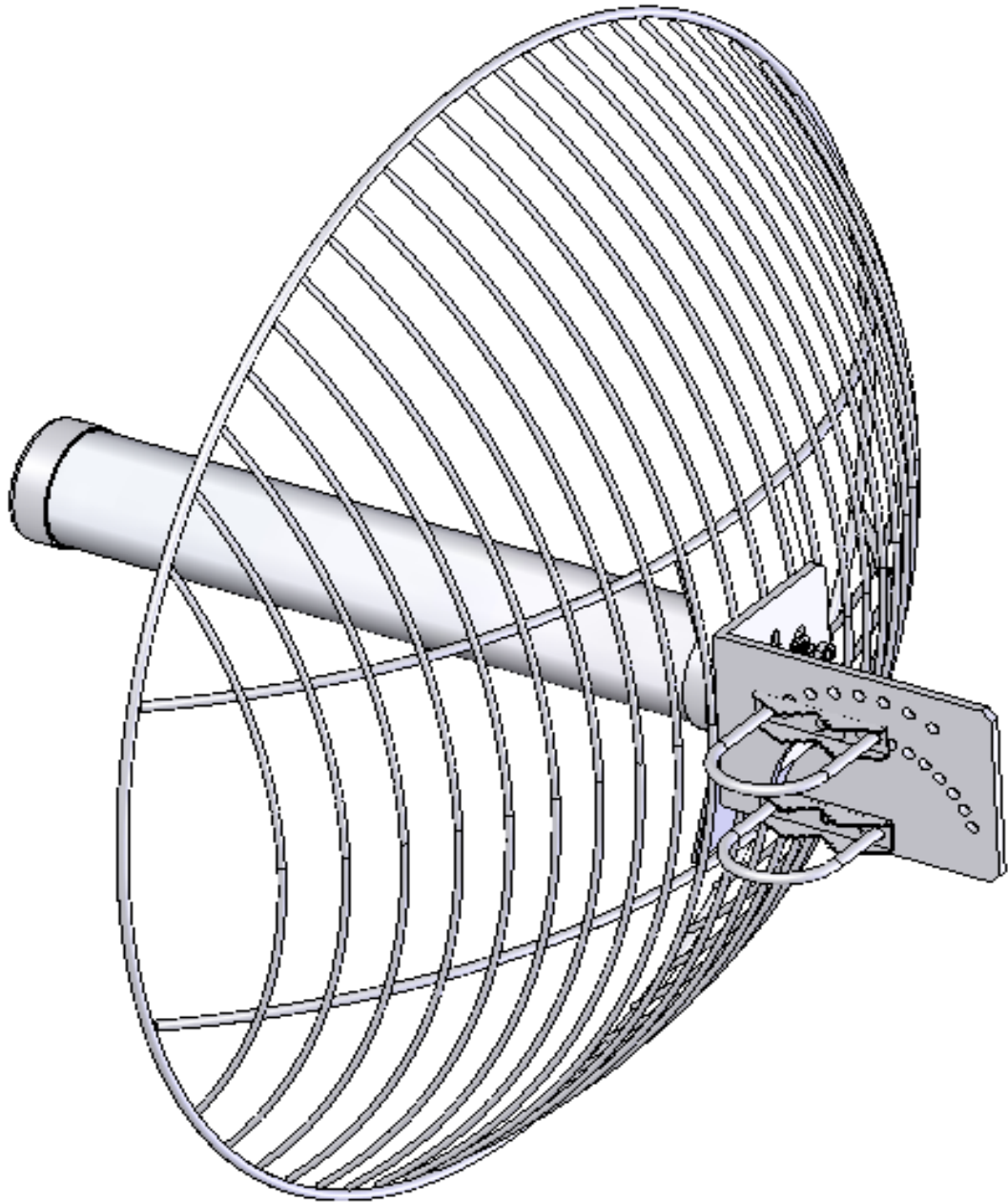


5.8GHz RF HI-GAIN ANTENNA

ITEM NO : 1CO-51829



※ SPECIFICATION

- Frequency: 5100~5900 MHz
- Max gain: 29dBi
- Connector: N female
- Max input power: 25W Max
- Wave impedance: 50 OHMS $\pm 5 \Omega$
- Dimensions: $\varphi 900 \times 250$ mm
- Weight: 4.86 kg
- For Image/Data/Voice communications and Wireless LAN system

INSTALLATION GUIDE

